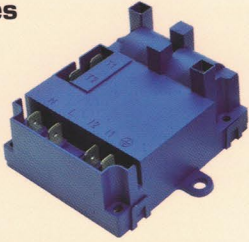


## Re-igniters

## Switch harnesses

## Led display

### 800 series



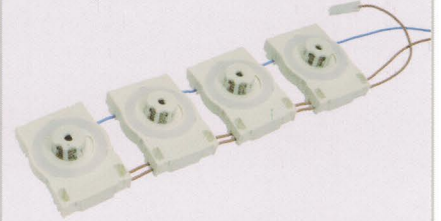
Outlets: 1 - 2  
 Supply Voltage (VAC) 220 - 240  
 Optional: 800 series transformer  
 Tabs: LV 6,3x0,8 - HV 2,8x0,8

### 930 series - push



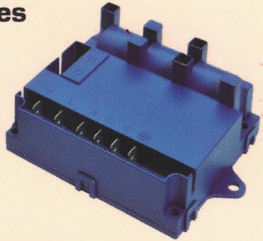
Layout: on demand  
 Supply Voltage (VAC) 250  
 Current Rating: 0,1 A  
 Suitable for a wide range of gas taps

### Multiple modules



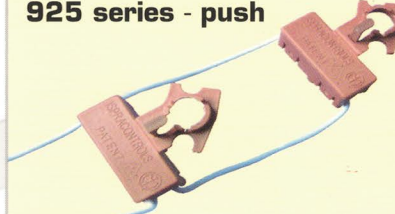
with integrated switch for ignition  
 Design: on demand

### 800 series



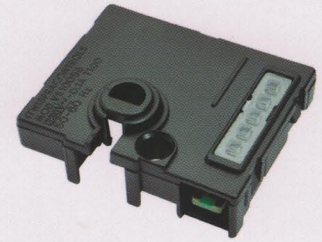
Outlets: 3  
 Supply Voltage (VAC) 220 - 240  
 Optional: 800 series transformer  
 Tabs: LV 6,3x0,8 - HV 2,8x0,8

### 925 series - push



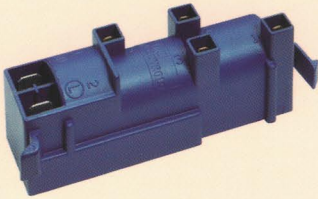
Layout: on demand  
 Supply Voltage (VAC) 250  
 Current Rating: 0,1 A  
 Suitable for BSI gas taps

### Single module



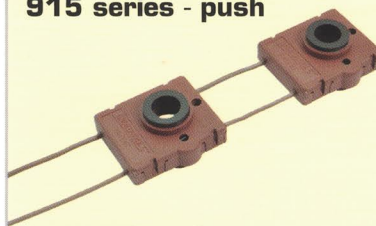
Design: on demand

### 800 series transformer



Outlets: 4 - 6  
 Tabs: LV 6,3x0,8 - HV 2,8x0,8

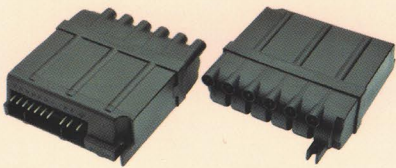
### 915 series - push



Layout: on demand  
 Supply Voltage (VAC) 250  
 Current Rating: 0,1 A  
 Suitable for SABAF gas taps

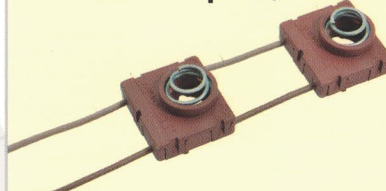
## Oven cavity lighting

### 650 series



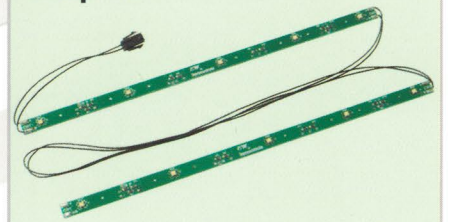
Outlets: 4 - 5 - 6  
 Supply Voltage (VAC) 120; 220 - 240  
 Tabs: LV 11 way connector  
 HV 2,8x0,8

### 905 series - push/rotative



Layout: on demand  
 Supply Voltage (VAC) 250  
 Current Rating: 0,1 A  
 Suitable for a wide range of gas taps

### Strip led



Design: on demand

### 140 series - screw/snap



Outlets: 1  
 Supply Voltage (VAC) 120  
 Tabs: LV 6,3x0,8 - HV 2,8x0,8

### 905 series - control on single tap



Layout: on demand  
 Supply Voltage (VAC) 250  
 Current Rating: 0,1 A  
 Suitable for a wide range of gas taps

COMERCIAL  
**tecasa**

Legenda

LV: Low Voltage  
 HV: High Voltage